

CLOUD G/CLOUD G LUX Infant Car Seat

Owner's Manual

▲ READ this Owner's Manual carefully before first use, and keep it for future reference.

Welcome to CYBEX!

Welcome to the CYBEX family.

Thank you for purchasing the CYBEX CLOUD G/CLOUD G LUX. We are proud to bring this German-engineered product to the United States and Canada. We hope the CLOUD G/CLOUD G LUX will make your child's travel both safer and more pleasant, as well as make installation and use for you as simple as possible.

The CLOUD G/CLOUD G LUX brings a number of important safety innovations to the Infant Car Seat category:

- Rigid LATCH (LATCH/UAS System*)
- SafeLock™ Belt Tensioner
- Integrated Anti-Rebound
- Linear Side-Impact Protection (L.S.P.) System
- Full Recline Backrest
- No Rethread Harness
- Load Leg (CLOUD G LUX Only)
- SensorSafe™ Chest Clip (CLOUD G LUX Only)

* see pg. 26

Statistics show that over 75% of Child Restraints are being used incorrectly!

Please read and follow these instructions carefully to install the CYBEX CLOUD G/CLOUD G LUX correctly, even if the installation and use of this Infant Car Seat might seem simple and intuitive.

Before the first use of the CYBEX CLOUD G/CLOUD G LUX Infant Car Seat, please make sure you have followed all the steps in the Safety Checklist on pg. 83.

Following the American Academy of Pediatrics' recommendations for safe transportation of infants, **we recommend children remain in a rear-facing car safety seat as long as possible, until they reach the highest weight or height allowed by their seat.** Visit www.aap.org for more information on the Academy's recommendation.

No car seat can guarantee protection from injury in every situation, but proper use helps reduce the risk of death or serious injury. If you have any questions or need assistance, please contact CYBEX at 1-877-242-5676 (USA and Canada).

Also, please remember to register your Infant Car Seat so we can contact you in the unlikely event of a recall. Register online at: <http://register.cybex-online.com/us/carseats> (USA) or <http://register.cybex-online.com/ca/carseats> (Canada).

Keep this Owner's Manual for future reference by storing it in the pocket on the bottom of the CYBEX CLOUD G/CLOUD G LUX Infant Car Seat. We appreciate your purchase and invite you to visit www.cybex-online.com to see other great CYBEX products.

Table of Contents

READ OWNER'S MANUAL PRIOR TO INSTALLING AND USING THIS CHILD RESTRAINT. KEEP INSTRUCTIONS FOR FUTURE USE.

Welcome to CYBEX!	2
Registration and Recall Information	6
Child Usage Guidelines	8
Premature Infant Use	10
Overview of the CLOUD G/CLOUD G LUX Infant Carrier	12
Overview of the CLOUD G/CLOUD G LUX Base.....	14
Warnings	16
Infant Car Seat Features	
Rigid LATCH	28
SafeLock™ Belt Tensioner.....	29
Integrated Anti-Rebound	29
Linear Side-impact Protection (L.S.P.) System.....	30
Full Recline Backrest.....	32
No Rethread Harness.....	33
Load Leg (CLOUD G LUX Only)	34
SensorSafe™ Chest Clip (CLOUD G LUX Only)	37

Table of Contents

**FOR STEP-BY-STEP INSTRUCTION VIDEO ON INSTALLING THE CLOUD G/
CLOUD G LUX, SCAN THE QR CODE.**



Installing and Removing the Infant Carrier	
Installing the Base Using Rigid LATCH	38
Installing the Base Using Lap/Shoulder Belts.....	42
Installing the Base Using Lap Belt Only	47
Installing the Infant Carrier Only Using Lap/Shoulder Belts	52
Installing the Infant Carrier Only Using Lap/Shoulder Belts (Alternate).....	56
Installing the Infant Carrier Without Base Using Lap Belt Only	59
Using the Infant Carrier	62
Using the Infant Carrier With The Base	66
Securing the Child	70
Using the Infant Carrier on Aircraft	73
Removing and Replacing Seat Covers.....	75
Care and Cleaning.....	82
Safety Checklist.....	83
Resources	84
Warranty	86

Registration and Recall Information

REGISTERING YOUR CHILD RESTRAINT

Please complete the registration card that came with your child restraint and mail it in immediately or register online.

Child restraints could be recalled for safety reasons. You must register this restraint to be reached in a recall. Send your name, address, e-mail address if available, and the restraint's model number and manufacturing date to:

**Columbus Trading-Partners USA Inc.
Attn: ParentLink
1801 Commerce Drive
Piqua, Ohio 45356, USA**

or call 1-877-242-5676 or register online at
<http://register.cybex-online.com/us/carseats>

For recall information, call the U.S. Government's Vehicle Safety Hotline at: 1-888-327-4236 (TTY: 1-800-424-9153), or go to www.NHTSA.gov.

PUBLIC NOTICE FOR CANADIAN CUSTOMERS

To register your child restraint, return the registration card, call 1-877-242-5676, or register online at <http://register.cybex-online.com/ca/carseats>

For recall information, call Transport Canada at 1-800-333-0510 (1-613-993-9851 in Ottawa region) or Goodbaby Canada Inc. at 1-877-242-5676.

Registration and Recall Information

CERTIFICATION

Regulatory Notice: This Child Restraint system meets all applicable requirements of Federal Motor Vehicle Safety Standard (FMVSS) 213 and Canadian Motor Vehicle Safety Standards (CMVSS) 213 and 213.1.

This restraint is certified for use only in passenger and multi-purpose passenger motor vehicles, buses, and trucks equipped with lap/shoulder belt systems.

THIS RESTRAINT IS CERTIFIED FOR USE IN AIRCRAFT IF USED WITHOUT THE BASE.

Check with your airline before departure to make sure this restraint meets their requirements, then refer to pgs. 73-74 for complete instructions on installing your child restraint in aircraft.



Child Usage Guidelines

! WARNING! DEATH or SERIOUS INJURY can occur.

This Child Restraint is designed for use by children in **REAR-FACING MODE ONLY**. To use this Child Restraint properly, children **MUST** meet the size and age requirements on the following pages.

The American Academy of Pediatrics (AAP) recommends keeping children **REAR-FACING** for as long as possible, until they reach the maximum height or weight for their Child Restraint in **REAR-FACING** orientation.* Additionally, some states' laws require children to be **REAR-FACING** until age 2. Accordingly, you will see this guidance reflected in the Child Requirements on the following pages. Please review any applicable local, state or provincial laws related to child passenger safety before installing and using this Child Restraint.

*Pediatrics. 2018;142(4):e20182460

Child Usage Guidelines

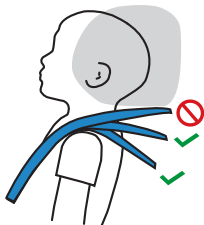
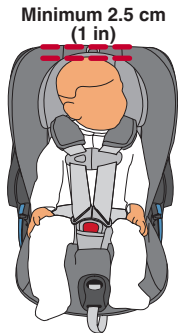
Do not use this child restraint if your child does not meet all of these requirements:

- Weight is between 1.8 and 15.8 kg (4 and 35 lbs)
- Height is between 43 and 81 cm (17 and 32 in)
- Top of child's head is a minimum of 2.5 cm (1 in) below the top of the Infant Carrier or headrest, **WHICHEVER IS HIGHER.**

IMPORTANT: Once your child **EXCEEDS** any of the size requirements above, they **MUST DISCONTINUE** use of this Child Restraint. After your child outgrows the CLOUD G/ CLOUD G LUX, keep your child **REAR-FACING** in a convertible or all-in-one car seat as long as the seat allows, according to the manufacturer's specifications, before turning them around to ride **FORWARD-FACING**.

IMPORTANT: For proper use of the Infant Carrier, the Harness shoulder straps **MUST** be **AT OR JUST BELOW** your child's shoulders.

NOTE: Regularly check for proper harness height as your child grows.



Child Usage Guidelines

Premature Infant Use

Before using this Child Restraint for preterm or low birth weight infants, ensure the Child Requirements are met and follow the guidelines in this section.

According to the National Highway Traffic Safety Administration (NHTSA), a properly installed Child Restraint reduces the risk of death by over 70% for infants involved in crashes. Federal Motor Vehicle Safety Standard (FMVSS) 213 establishes design and dynamic performance requirements for Child Restraint systems. However, the standard has no minimum weight limit and does not address the special medical needs of preterm or low birth weight infants. To ensure that preterm and low birth weight infants are transported safely, the guidelines published by the American Academy of Pediatrics (AAP) in Pediatrics 2009;123:1424–1429 (reaffirmed June 2018) must be followed.

Preterm and low birth weight infants are at additional risk of breathing difficulties and heart problems when placed in a Child Restraint. CYBEX requires that the evaluation recommended by the AAP be conducted for all infants born earlier than 37 weeks and all newborn infants who weigh less than 2.26 kg (5 lbs) at birth before their first car trip to check for breathing difficulties or heart rate problems when traveling in a **REAR-FACING** Child Restraint. Newborn infants should **NEVER** travel in a **FORWARD-FACING** Child Restraint.

Child Usage Guidelines

Premature Infant Use

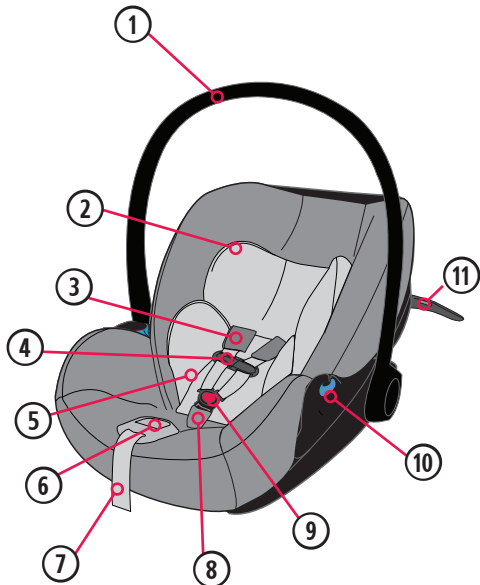
The AAP recommends that appropriate hospital staff observe your infant in the Child Restraint for a period of 90 to 120 minutes or the duration of travel, whichever is longer. This period of observation must be performed with the infant properly positioned as described in these instructions and with the Child Restraint placed at an angle that is approved for use in the vehicle. The hospital staff will check for any breathing difficulties or heart rate problems. Your child's pediatrician will let you know if there are any special considerations for travel. The number of trips and the duration of time the infant is seated in the Child Restraint should be minimized. A caregiver should ride in the back seat to monitor the infant during travel.

You can learn more about the AAP's recommendations as well as other resources for parents and medical professionals, at <https://www.healthychildren.org/english/safety-prevention/on-the-go/Pages/default.aspx>.

Overview of the CLOUD G/CLOUD G LUX Infant Car Seat

Front View

1. Carry Handle
2. Headrest
3. Shoulder Pads (removable)
4. Chest Clip*
5. Infant Insert (removable)
6. Harness Adjustment Button
7. Harness Adjustment Strap
8. Buckle Pad
9. Harness Buckle
10. Lap Belt Guide
11. Linear Side Impact Protection (L.S.P.) System (deployed)

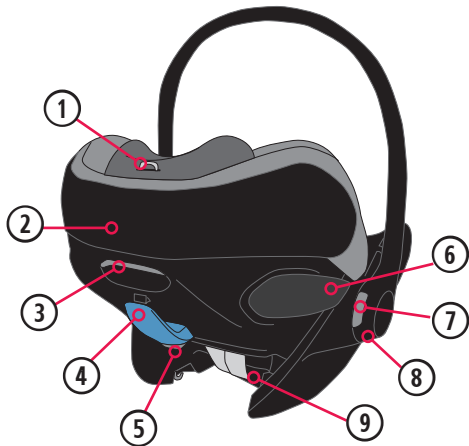


* Styles may vary.

Overview of the CLOUD G/CLOUD G LUX Infant Car Seat

Rear View

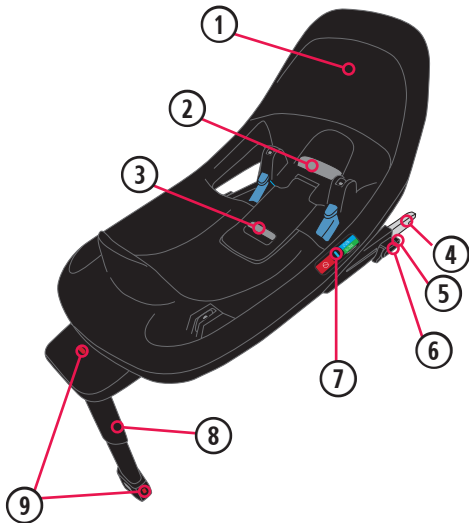
1. No Rethread Harness Adjuster Handle
2. Canopy (stored)
3. Recline Release Handle
4. Shoulder Belt Guide
5. Base/Stroller Release Button
6. L.S.P. (stored)
7. Carry Handle Adjustment Buttons (one on each side)
8. Travel System Attachment Slot
9. Owner's Manual (stored)



Overview of the CLOUD G/CLOUD G LUX Base

Top View

1. Integrated Anti-Rebound
2. Recline Foot Adjustment Handle
3. SafeLock Belt Tensioner
4. Rigid LATCH Connector
5. Rigid LATCH Adjustment Button
6. Rigid LATCH Indicator
7. Level Indicator
8. Load Leg (extended)*
9. Load Leg Indicators (top and bottom)*

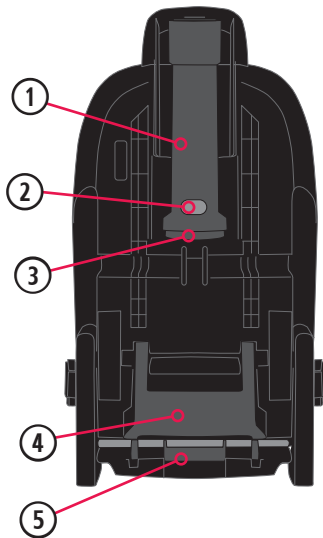


* CLOUD G LUX Base only

Overview of the CLOUD G/CLOUD G LUX Base

Bottom View

1. Load Leg (stored)*
2. Load Leg Release Button*
3. Load Leg Foot*
4. Leveling Foot (stored)
5. Rigid LATCH Release



* CLOUD G LUX Base only
15

! WARNING! DEATH or SERIOUS INJURY can occur.

AIRBAG WARNINGS

- **DO NOT** place a rear-facing child restraint on a front seat with an active airbag. **DEATH OR SERIOUS INJURY** can occur. The back seat is the safest place for children 12 and under.
- **DO NOT** use this restraint in the front seat of a vehicle equipped with an air bag. Interaction between a rear facing restraint and air bags may cause death or serious injury. If your vehicle has an air bag, refer to the vehicle owner's manual for child restraint installation.
- If the rear seat of your vehicle is equipped with side air bags, refer to the following information for proper usage.



Vehicles built prior to the 2002 model year, DO NOT use this restraint in a vehicle seating position equipped with a side air bag unless authorized by the vehicle manufacturer.

Model year 2002 and newer vehicles, refer to your vehicle owner's manual before placing this restraint in a seating position equipped with a side air bag.

- **DO NOT** place any objects between the restraint and the side air bag, as an expanding air bag may cause the items to strike your child.

GENERAL WARNINGS

The primary protection for occupants of a vehicle in a collision is the structure of the vehicle itself. Correctly used per the instruction and labeling, this child restraint will substantially improve the chances for survival in most crashes.

- **READ** this Owner's Manual carefully before first use and keep it for future reference.
- **FOLLOW ALL INSTRUCTIONS** on this Infant Car Seat and in the written instructions stored in the compartment on the bottom of the seat shell.

! WARNING! DEATH or SERIOUS INJURY can occur.

- **NEVER** install or use this child restraint until you have read and understand the instructions in this manual, your vehicle Owner's Manual, and the labels on your Infant Car Seat. If there is a conflict between this manual and the vehicle Owner's Manual, the vehicle Owner's Manual must be followed. Failure to follow these instructions can result in death or serious injury to your child in a crash.
 - **DO NOT** allow others to install or use this child restraint unless they understand how to correctly install and use it.
 - **DO NOT** use a child restraint with an unknown history.
 - **NEVER USE CHILD RESTRAINT IF IT HAS DAMAGED, BROKEN, OR MISSING PARTS.**
 - **ALWAYS REPLACE THE CHILD RESTRAINT AFTER A CRASH OF ANY KIND, EVEN IF IT WAS UNOCCUPIED.**
- A crash can cause damage to the child restraint that may not be visible.
- **NEVER** allow someone else to use this child restraint without also passing along this manual to them.
 - **ALWAYS** check buckles and other parts for hot surfaces before placing your child in the child restraint. A hot surface could burn your child! Cover an unoccupied child restraint with a blanket when leaving it in a vehicle. The interior of a vehicle can become hot enough to burn child even on a cloudy day.
 - **DO NOT** attempt to make repairs to or otherwise modify or tamper with this child restraint.

LOCATION WARNINGS

- **ACCORDING TO ACCIDENT STATISTICS**, children are safer when properly restrained in rear vehicle seating positions.

WARNING! DEATH or **SERIOUS INJURY** can occur.

- **ONLY** place this child restraint in a vehicle seating location allowed by the vehicle manufacturer. To determine allowable seating positions, refer to your vehicle Owner's Manual for information about vehicle seat belt systems, air bags, side air bags, front passenger side air bags and child restraint installations.
- **NOT EVERY LOCATION WITHIN A VEHICLE MAY BE SAFE FOR THE INSTALLATION OF THIS CHILD RESTRAINT.** In fact, some vehicles have no seating position that is safe for the installation of this child restraint. Improper placement of this child restraint within a vehicle will increase the risk of death or serious injury.
- **NEVER** use this child restraint in a vehicle seating position where it cannot be secured tightly. A loosely installed child restraint will not protect your child in a crash.
- **NEVER** use this child restraint on boats, low speed vehicles (LSV), all-terrain vehicles (ATV), golf carts, or any other non-certified application.
- This child restraint is allowed to touch the vehicle seat in front of it as long as the recline angle of the child restraint is not affected.
- **ALWAYS USE** the L.S.P. (Linear Side-impact Protection) device when the Infant Car Seat is installed next to a vehicle door, either with or without the Base. **NEVER** extend the L.S.P. device towards the interior of the vehicle, a passenger, another child restraint, or when the child restraint is placed in the rear middle seating position.
- **NEVER LIFT OR CARRY** the child restraint using the L.S.P. device.
- **ONLY** use this child restraint on forward-facing vehicle seats.

! WARNING! DEATH or SERIOUS INJURY can occur.

- **NEVER** install this child restraint in vehicle seats that face the rear or side of the vehicle.



- **VEHICLE TYPES WHERE THE RESTRAINT SYSTEM CAN NOT BE USED:** This child restraint is **NOT** to be used in vehicles that do not have vehicle seat belts or lower anchors (see pg. 26).
- **ONLY** use this child restraint on vehicle seats with backs that lock into place. In the event of a sudden stop, an unlocked vehicle seat back could prevent this child restraint from protecting your child.
- This child restraint must be securely belted to the vehicle, even when it is unoccupied, since in a crash an unsecured child restraint system may injure other occupants.

USAGE WARNINGS

- **ONLY USE** with children who weigh between 1.8 and 15.8 kg (4 and 35 lbs) **AND** whose height between 43 and 81 cm (17 and 32 in).
- **DO NOT USE** this child restraint if top of child's head is a minimum of 2.5 cm (1 in) below the top of the Infant Carrier or headrest, **WHICHEVER IS HIGHER.**
- **ONLY USE** this child restraint **REAR FACING.**
- **NEVER INSTALL** this child restraint in a vehicle when the carrier is in Full Recline Mode.
- **ALWAYS USE** the complete and buckled five-point Harness around your child.
- **ALWAYS CHECK** the Harness buckle to make sure it is securely latched.

WARNING! DEATH or **SERIOUS INJURY** can occur.

- **ALWAYS KEEP** your child properly secured in the Harness, especially when outside the vehicle in Full Recline Mode.
- Children have **STRANGLED** in loose or partially buckled harness straps. **FULLY RESTRAIN** the child even when the carrier is used outside the vehicle.
- **ALWAYS** have the handle **LOCKED** while using this child restraint in a vehicle.
- **MAKE SURE** the handle is **LOCKED** in the **CARRY POSITION** (see pg. 63) before lifting Infant Carrier by the handle. An unlocked handle could move unexpectedly, causing child to fall.
- **ALWAYS CHECK** to make sure the Infant Carrier is securely attached to the Base each time you use this restraint. After attaching the Infant Carrier to the Base, **LIFT UP** on the handle to ensure the Carrier is securely attached to the Base.
- **BEFORE** each use, **ALWAYS CHECK** that the child restraint is tightly secured in the vehicle seat and does not move more than 2.5 cm (1 in) in any direction when checked at the Belt Path.
- When using Rigid LATCH, **ALWAYS CHECK** that both indicators are **GREEN**, indicating that the Rigid LATCH connectors are secured to the vehicle anchors.
- **WHEN NOT IN USE**, securely store Rigid LATCH Connectors.
- **SUFFOCATION HAZARD:** Infant Carrier can roll over on soft surfaces and suffocate child. **NEVER** place Infant Carrier on beds, sofas, or other soft surfaces.
- **FALL HAZARD:** Child's activity can move carrier. **NEVER** place carrier on counter tops, tables, or any other elevated surfaces.

! WARNING! DEATH or **SERIOUS INJURY** can occur.

- **FALL HAZARD:**
The carrier can fall from the shopping cart. Do not use on shopping cart.



- **ONLY USE** Infant Carrier with strollers that are approved by the manufacturer. Refer to the stroller Owner's Manual for details about how to attach the Infant Carrier to your stroller. For a list of compatible strollers, please visit www.cybex-online.com.

LOAD LEG WARNINGS

(CLOUD G LUX BASE ONLY)

- **NEVER** install in a seating position where the load leg, even in its shortest position, causes the Base to be pushed up above the vehicle seat. If necessary, install the Base with the load leg stored, in another seating position, or install the Infant Carrier without the Base.
- **NEVER EXTEND** the load leg beyond the **FIRST** hole that will lock it firmly against the vehicle floor.
- **NEVER** install the load leg in a seating position that will not allow the leg to be extended in a **LOCKED** position with firm contact with the vehicle floor.
- **NEVER** use the load leg if the indicator won't turn **GREEN** when locked in position and touching the vehicle floor.
- Some vehicle manufacturers do not allow the use of load legs in all seating positions. **Please refer to your vehicle's owner's manual before installing the Base with the load leg.**
- **NEVER** allow children to play with the belt tensioner or the load leg.
- **NEVER** place load leg on an uneven floor in the rear of the vehicle, it must always be placed flat on the vehicle floor.

WARNING! DEATH or **SERIOUS INJURY** can occur.

- **NEVER** use the load leg to recline the car seat. The recline adjustment foot on the Base is intended to recline the seat.
- **ALWAYS CHECK** to make sure the load leg is locked into the storage compartment in the Base when it is not in use.
- **NEVER USE** accessories or parts with this child restraint other than those approved by CYBEX. Use of accessories or parts from other manufacturers could alter the performance of the child restraint.
- **DO NOT** attach additional padding, toys, or other devices not made by CYBEX or described in these instructions for the Child Restraint. Items not tested with the Child Restraint could injure the child. Additional pads or pillows may interfere with the function of the harness system, or cause breathing problems if the child's head falls forward, increasing the risk of serious injury or death.

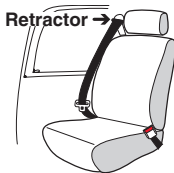
ADDITIONAL WARNINGS

- **REGISTER** your child restraint with the manufacturer. This is the best way to reach you in the event of a recall.
- **NEVER USE** this child restraint when it is older than six (6) years. The date of manufacture can be found on a label affixed to the bottom of the Infant Carrier, as well as on the Base.
- **NEVER USE** this child restraint if the Harness straps are cut, frayed, or damaged in any way.
- **NEVER LEAVE** child unattended.

! WARNING! DEATH or SERIOUS INJURY can occur.

SEAT BELT WARNINGS

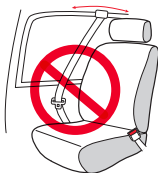
- **ALWAYS** read your vehicle owner's manual to determine what vehicle belts and retractors are used in your vehicle.



- **DO NOT** use this Child Restraint in a seating position with door-mounted seat belts.



- **DO NOT** use this Child Restraint in a vehicle with seat belts that automatically move along the vehicle frame when the door is opened.



- **DO NOT** use this Child Restraint in a vehicle equipped with lap belts that only lock during a sudden stop or crash (Emergency Locking Retractor - ELR). You must use a seating location with a lap/shoulder belt or a locking lap belt. Check your vehicle owner's manual to see if you have lap belts with ELRs.



- **DO NOT** use on vehicle seats when both portions of the lap-only belt are positioned forward of the seat crease.



- **DO NOT** use with lap/shoulder belts with two retractors. If the vehicle seat belts are not routed and fastened correctly, the Child Restraint may not protect the child in a crash.



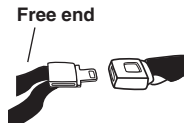
! WARNING! DEATH or SERIOUS INJURY can occur.

- **DO NOT** use this child restraint with inflatable seat belts.
- Check your vehicle owner's manual to determine how to lock your seat belt for child restraint installation. The seat belt must be locked to properly secure the child restraint.
- **DO NOT** allow the vehicle seat belt release button to touch the child restraint. Accidental contact may cause the seat belt to release. If necessary, turn the seat belt release button away from the Child Restraint or move the Child Restraint to a different location.
- Child restraint systems should be securely belted to the vehicle, **even when they are not occupied**, since in a crash an unsecured child restraint system may injure other occupants.

If you have any of these types of vehicle belt systems listed, these are SAFE to use to install your Child Restraint in the vehicle. Review vehicle owner's manual for specific instructions on Child Restraint installation.

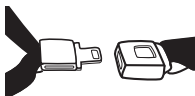
Lap Belt with Locking Latch Plate

- Once buckled, the vehicle belt is tightened by pulling on the free end of the strap until the belt is tight.



Lap/Shoulder Belt with Locking Latch Plate

- The lap portion of this belt does not loosen once the belt is buckled.
- The vehicle belt is tightened by pulling up hard on shoulder belt and feeding the extra webbing into the retractor.



! WARNING! DEATH or SERIOUS INJURY can occur.

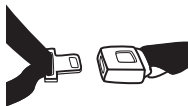
Lap Belt with Automatic Locking Retractor (ALR)

- The automatic locking retractor does not allow the lap belt to get longer once it is buckled. The vehicle belt is tightened by feeding seat belt webbing into retractor.




Lap/Shoulder Belt with Sliding Latch Plate with Locking Retractor

- The latch plate slides freely along the lap/shoulder belt. Vehicle belts with sliding latch plates are typically locked at the shoulder belt retractor by buckling the belt and pulling all of the webbing out slowly to switch the retractor.
- Check vehicle owner's manual for specific instructions. The vehicle belt is tightened after switching the retractor by pulling up on shoulder belt and feeding the webbing into the retractor.



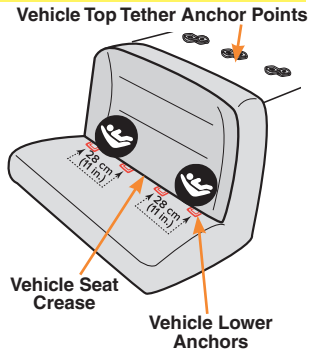
! WARNING! DEATH or SERIOUS INJURY can occur.

LATCH and **UAS** are acronyms for **Lower Anchors** and **Tethers for Children (USA)** and **Universal Anchorage System (Canada)**, and refer to a pair of fixed Lower Anchors (or bars) and a Top Tether Anchor that are built into your vehicle, in vehicles built after September 1, 2002. Your vehicle owner's manual may also refer to this system as **ISOFIX** or **Lower Universal Anchorage System (LUAS)**.

The lower LATCH/UAS anchors are located in the crease, or bight, between the vehicle seat back and seat cushion, and if not visible, will typically be indicated by the  symbol. Top Tether Anchors are located in various places behind the rear vehicle seat.

Center Seating Positions. CYBEX allows this child restraint to be installed using the two inner Lower Anchors from the outboard seating positions if the distance between the inner Lower Anchors is exactly 28 cm (11 in). When using the inner Lower Anchors make sure there are no obstructions from a buckle stalk for the installation or that the Rigid LATCH connectors do not block vehicle belt buckles.

This Child Restraint can be safely installed using either LATCH/UAS or vehicle belts and meets the requirements of Federal Safety Standard FMVSS 213 and Canadian Safety Standard CMVSS 213 with either installation method. Either method is safe for your child when installed correctly.



! WARNING! DEATH or SERIOUS INJURY can occur.

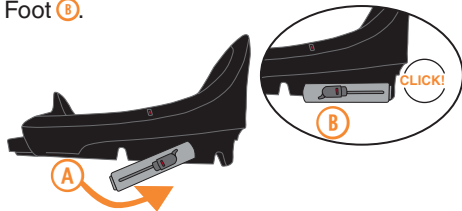
- The LATCH/UAS system is intended to be used **ONLY** as described in these instructions. Refer to your vehicle Owner's Manual for lower anchor bar positions in your vehicle.
- In addition to these instructions, read and follow your vehicle owner's manual regarding installation of the Child Restraint and LATCH/UAS. If there is a discrepancy, follow your vehicle owner's manual.
- **NEVER** use the vehicle seat belts when using Rigid LATCH.
- **ONLY** use for securing Child Restraint to vehicle lower anchor bars.
- **NEVER** attach two Rigid LATCH Connectors to one vehicle lower anchor bar.
- **ALWAYS** be sure that Rigid LATCH is attached to the vehicle lower anchor bars by pulling hard on the Lower Anchor Connectors. If they are not attached, the Lower Anchor Connector assembly will not secure your Child Restraint.

Infant Car Seat Features

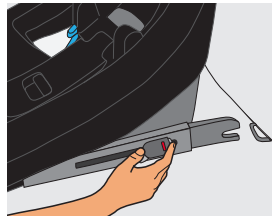
Rigid LATCH

Rigid LATCH is a LATCH/UAS system that connects directly from the Infant Car Seat Base to the vehicle lower anchors with no LATCH/UAS straps. **NOTE:** Rigid LATCH ships already locked in the recline foot **(B)** position.

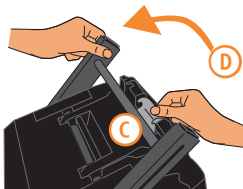
To Remove Rigid LATCH from storage, rotate 180° **(A)**, then lock into Base Recline Foot **(B)**.



To Extend or Retract Rigid LATCH, press the buttons on both sides of the Rigid LATCH and slide the LATCH/UAS Connectors out or in as needed.



To Return Rigid LATCH to storage, flip the Base over, pull the lever located on the underside of the Base **(C)**, and rotate 180° back into storage **(D)**.



Rigid LATCH is equipped with red/green indicators that turn **GREEN** when the LATCH/UAS Connectors are attached to the vehicle anchors.

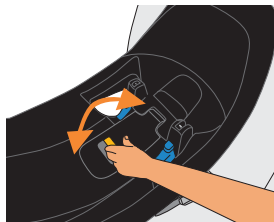
Infant Car Seat Features

SafeLock™ Belt Tensioner

The CLOUD G/CLOUD G LUX Infant Car Seat Base is equipped with a SafeLock™ Belt Tensioner that achieves a quick and secure installation when using your lap/shoulder or lap only vehicle belts.

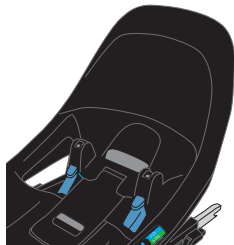
To Open the SafeLock™ Belt Tensioner, squeeze the release handle (shown in orange) and lift up.

To Close, push SafeLock™ Belt Tensioner down until an audible click is heard.



Integrated Anti-Rebound

The CLOUD G/CLOUD G LUX Infant Car Seat Base is designed with an Integrated Anti-Rebound feature that provides additional protection in the event of a crash by reducing car seat rotation toward the back of the vehicle.



Infant Car Seat Features

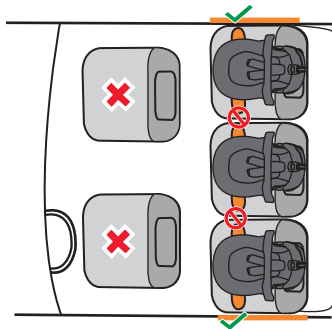
Linear Side-impact Protection (L.S.P.) System

! WARNING! DEATH or SERIOUS INJURY can occur.

- **ALWAYS USE** the L.S.P. device when the Infant Car Seat is installed next to a vehicle door or panel, either with or without the Base. **NEVER** extend the L.S.P. towards the interior of the vehicle, a passenger, another child restraint, or when the child restraint is placed in the rear middle seating position.
- **NEVER LIFT OR CARRY** the child restraint using the L.S.P. device.

The Linear Side-Impact Protection System (L.S.P.) is built into the CLOUD G/CLOUD G LUX. This system enhances the safety of your child in the event of certain side crashes. In order to achieve the best possible protective effect, extend the L.S.P. towards the car door or panel closest to the child restraint.

This system has been designed to reduce forces on your baby in the event of a side impact crash. To use the L.S.P. System, unfold the L.S.P. device as far as possible towards the car door or panel closest to the Infant Car Seat.



Infant Car Seat Features

Linear Side-impact Protection (L.S.P.)

To Extend the L.S.P. device, pull out the L.S.P. device on the side of the Infant Car Seat next to the vehicle door or panel.



To Retract the L.S.P. device, depress the button, push the L.S.P. device back into the carrier, and listen for an audible **CLICK**.



Infant Car Seat Features Full Recline Backrest

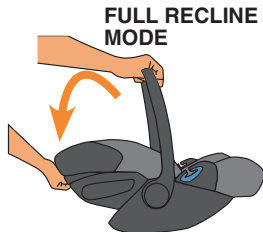
! WARNING! DEATH or SERIOUS INJURY can occur.

The CYBEX CLOUD G/CLOUD G LUX Full Recline Backrest must **ONLY** be used outside of the vehicle. **NEVER INSTALL** this child restraint in a vehicle when the carrier is in Full Recline Mode.

The CLOUD G/CLOUD G LUX Full Recline Backrest can be easily operated with one hand without having to take the child out of the carrier, and the extended leg rest allows the child to lie comfortably in an ergonomically correct position while the handle remains in the carrying position for easier mobility.

CLOUD G/CLOUD G LUX Full Recline Mode is compatible with all CYBEX strollers.

1. With one hand on the carry handle, squeeze the Recline Release Handle and push the seatback down until it locks into Full Recline Mode.
2. To get back to Car Seat mode, squeeze the Recline Release Handle and lift the seatback up until it locks into the upright position.



Infant Car Seat Features No Rethread Harness

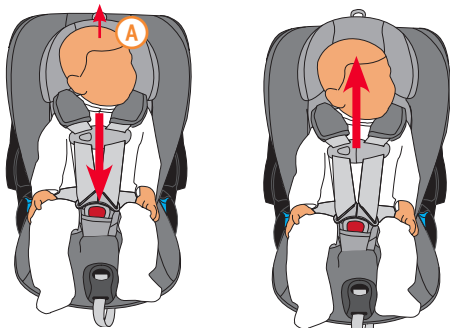
The CLOUD G/CLOUD G LUX has a headrest that automatically adjusts the harness height without the need to rethread it. Using the seat's No Rethread Harness, the headrest may be adjusted up and down through 12 positions to fit your baby.

The CLOUD G/CLOUD G LUX is shipped in the lowest position with the Infant Insert (pg. 64) already in position.

1. Unbuckle the Harness and Chest Clip
2. Place the child in the Infant Carrier, making sure the buttocks are sitting in the very bottom of the seat, with their crotch at the crotch strap.
3. Adjust for your baby by pulling up on the No Rethread Harness Adjuster **A** while sliding the headrest up until the Harness Slots are even with or slightly below your child's shoulders.

IMPORTANT: For proper use of the Infant Carrier, the Harness straps **MUST** be **AT OR JUST BELOW** your child's shoulders (see pg. 9).

NOTE: Regularly check for proper harness height as your child grows.



Infant Car Seat Features

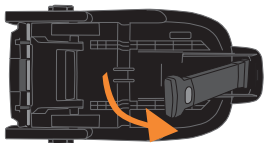
Load Leg (CLOUD G LUX Only)

The CLOUD G LUX Base is equipped with all the standard features shown on pgs. 28-29, and also includes a retractable load leg that helps minimize crash forces on a baby in a frontal crash.

The Load Leg is an effective safety feature of the CLOUD G LUX Base when used properly and **USING IT IS STRONGLY RECOMMENDED**. If necessary, the Base may be installed with the Load Leg folded up underneath the Base. Consult the vehicle owner's manual and the Load Leg Warnings on pages 21-22 of this manual. If ALL installation requirements for the Load Leg cannot be met, you **MUST** choose another seating position or install the Infant Carrier without the Base.

Using the Load Leg

1. Turn Base over and pull load leg out as shown. The indicator at the top of the load leg will turn **GREEN** when fully open.
2. Install the Base, making sure the recline angle is correct for your child (see pg. 65), then secure the Infant Carrier to the Base (see pg. 66).



Infant Car Seat Features

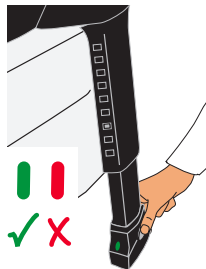
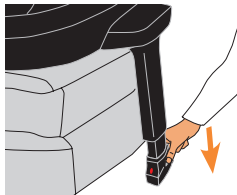
Load Leg (CLOUD G LUX Only)

3. Squeeze the Release Button on the Load Leg and extend the Foot until it rests flat on the vehicle floor. The indicator will turn **GREEN**.

NOTE: There should **NEVER** be any **space** between the Load Leg Foot and the vehicle floor.

4. Secure the Foot into place using the first hole that will lock it firmly against the vehicle floor without lifting the Base up off of the seat.

NOTE: It may be necessary to lift up slightly on the Base to allow the Foot to lock into the hole.



Infant Car Seat Features

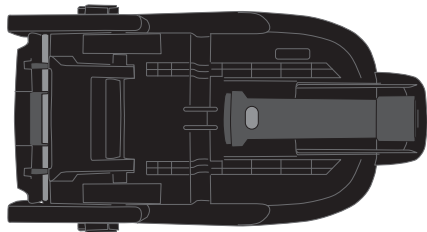
Load Leg (CLOUD G LUX Only)

Storing the Load Leg

When not using the load leg, it should be stored in the load leg storage area under the Base where it cannot be damaged.

1. Retract the Load Leg Foot until fully closed, then rotate back into the stored location.

NOTE: The tab on the load leg foot is pressed into a slot in the storage location on the Base and locks into position.



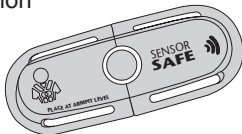
Infant Car Seat Features

SensorSafe™ Chest Clip (CLOUD G LUX Only)

The CLOUD G LUX is equipped with a SensorSafe chest clip that works with the SensorSafe mobile app which can be downloaded from The Apple App Store® or Google Play™.*

The SensorSafe mobile app can provide the following information directly to your smartphone:

- Reminder that your child is still in your automobile
- Current temperature of your automobile interior
- Owners Manuals
- Customer care contact information



SensorSafe® Technology

Questions? Comments?

See the SensorSafe Mobile App User Guide
included with this Infant Car Seat
or contact Parentlink at 1-877-242-5676.

* Trademarks are the property of their respective owners.

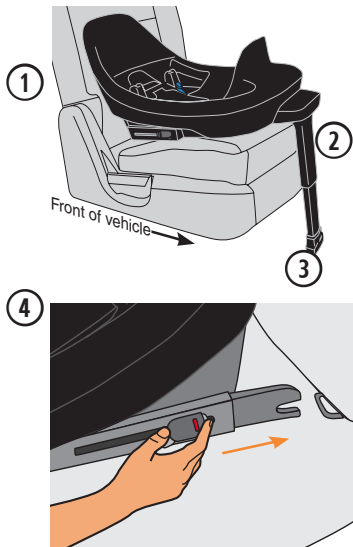
Installing and Removing the Infant Carrier

Installing with Base Using Rigid LATCH (Recommended Method)

1. Ensure Rigid LATCH is removed from storage and positioned for use (see pg. 28).
2. If equipped, unfold the Load Leg from underneath the Base.

NOTE: If necessary, the Base may be installed with the Load Leg folded up underneath the Base. Consult the vehicle owner's manual and the Load Leg Warnings on pages 21-22 of this manual. If ALL installation requirements for the Load Leg cannot be met, you **MUST** choose another seating position or install the Infant Carrier without the Base.

3. Position Base on a rear vehicle seat.
4. Press the two buttons on both sides of the Rigid LATCH and fully extend the LATCH/UAS Connectors.



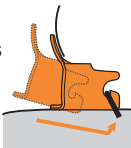
Installing and Removing the Infant Carrier

Installing with Base Using Rigid LATCH (Recommended Method)

5. While holding Rigid LATCH, attach both connectors to the vehicle lower anchors. Each should make an audible **CLICK** when attached. Make sure they are attached by pulling firmly on the connectors.

A **GREEN** indicator will be visible on the release button when the Rigid LATCH Connectors are attached to the lower anchors.

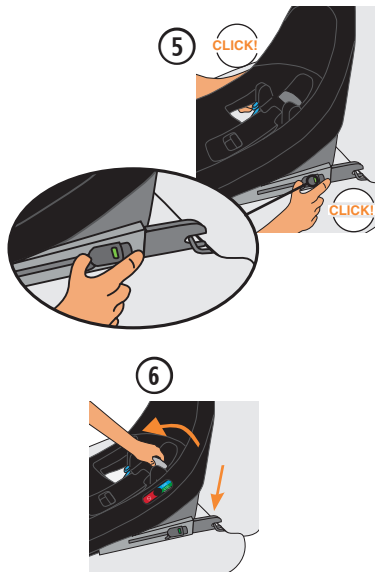
NOTE: For installations where vehicle lower anchors may be difficult to reach, you may obtain LATCH/UAS Guides by calling Customer Service at 1-877-242-5676.



6. Adjust the Leveling Foot to achieve the correct angle for your child's weight as shown on the Level Indicator.

1.8 - 9 kg
(4 - 20 lbs)

9 - 15.8 kg
(20 - 35 lbs)



Installing and Removing the Infant Carrier

Installing with Base Using Rigid LATCH (Recommended Method)

7. Push the Base until it rests flat against the vehicle seat back.
8. Grab the Base at the Belt Path and pull from side to side and front to back to make sure it is installed correctly. The Base should not move more than 2.5 cm (1 in) in any direction.

NOTE: To achieve a tighter fit with Rigid LATCH, you may need to snug the Base against the seat back by "walking" the Base further into position.

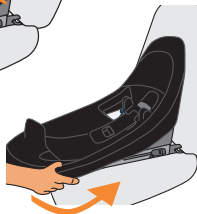
To do this, place one hand on the front of the Base and push toward the vehicle center until you hear a **CLICK**, then pull toward the vehicle door until you hear a second **CLICK**, repeating as needed until tight.

If the Base moves too much, you may need to try a different vehicle seat location or installation method, or both.

7



8



Installing and Removing the Infant Carrier

Installing with Base Using Rigid LATCH (Recommended Method)

9. Press the Release Button on the Load Leg (CLOUD G LUX models only) and extend it until the Foot makes firm contact with vehicle floor. Lock Leg into place using the first hole that will firmly lock it against the vehicle floor.

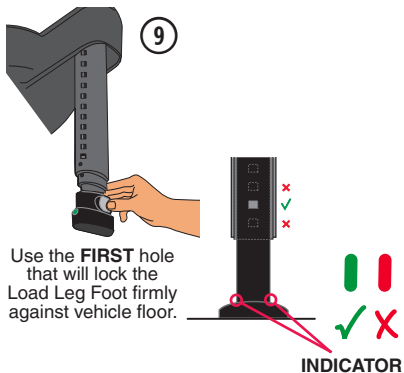
It may be necessary to lift up slightly on the Base to allow the Leg to lock into the hole.

10. Check that the Recline Angle remained in the appropriate range for the child's weight. If not, remove Base, adjust recline angle and reinstall.

1.8 - 9 kg
(4 - 20 lbs)

9 - 15.8 kg
(20 - 35 lbs)

11. If the Infant Carrier is next to a vehicle door or panel, extend the adjacent L.S.P. device (pg. 31).



Installing and Removing the Infant Carrier Installing with Base Using Lap/Shoulder Belts

! WARNING! DEATH or SERIOUS INJURY can occur.

NEVER install this child restraint using a non-locking vehicle lap shoulder belt. A locking clip must be used with a vehicle belt that **DOES NOT LOCK**. Call CYBEX Customer Care at 1-877-242-5676 to obtain a locking clip.

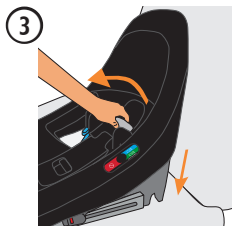
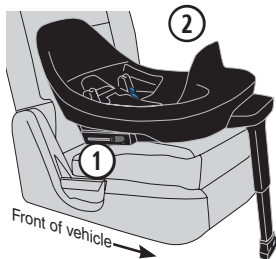
1. Ensure that Rigid LATCH is in the storage position and, if equipped, unfold the Load Leg from underneath the Base.
2. Position Base on a rear vehicle seat.

NOTE: If necessary, the Base may be installed with the Load Leg folded up underneath the Base. Consult the vehicle owner's manual and the Load Leg Warnings on pages 21-22 of this manual. If ALL installation requirements for the Load Leg cannot be met, you **MUST** choose another seating position or install the Infant Carrier without the Base.

3. Adjust the Leveling Foot to achieve the correct range for your child's weight as shown on the Level Indicator.

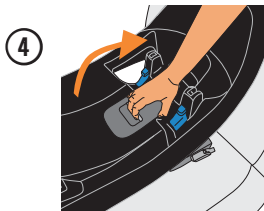
1.8 - 9 kg
(4 - 20 lbs)

9 - 15.8 kg
(20 - 35 lbs)



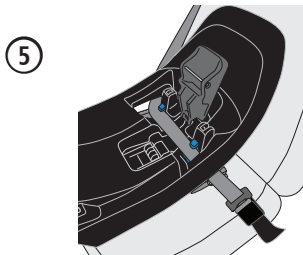
Installing and Removing the Infant Carrier Installing with Base Using Lap/Shoulder Belts

4. Open SafeLock Belt Tensioner.



5. Route both vehicle belts under the SafeLock Belt Tensioner and through the blue belt guides on both sides of the Base. **BUCKLE THE BELT.** Make sure the belts lay flat and are not twisted.

The vehicle belt should **ALWAYS** be routed **UNDER** the tab on the Belt Guide. **NEVER** place a vehicle belt over the tab on the Belt Guide, even in a vehicle with longer buckle stalks.

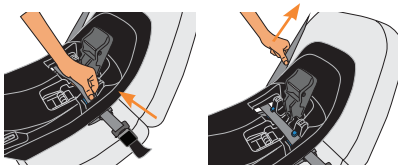


Installing and Removing the Infant Carrier Installing with Base Using Lap/Shoulder Belts

6. On the buckle side, first lift up on the shoulder belt to remove slack in the lap belt. Then remove slack from the shoulder belt on the opposite side.

At this point, only remove slack from the vehicle belts, being careful not to overtighten. The SafeLock Belt Tensioner will tighten the system fully.

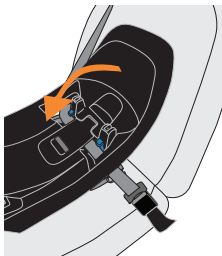
6



7. Press down on SafeLock Belt Tensioner until it locks into place.

If Belt Tensioner does not lock, try loosening the vehicle belt slightly.

7



Installing and Removing the Infant Carrier

Installing with Base Using Lap/Shoulder Belts

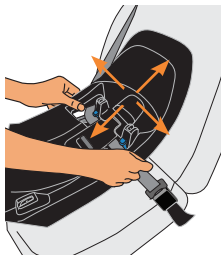
8. Grab the Base at the Belt Path and pull from side to side and front to back to make sure it is installed correctly. The Base should not move more than 2.5 cm (1 in) in any direction.

If the Base moves too much, open the SafeLock Belt Tensioner and remove a little more slack from the vehicle belt, then close and recheck. After this, if the Base still moves too much, you may need to try a different vehicle seat location or installation method, or both.

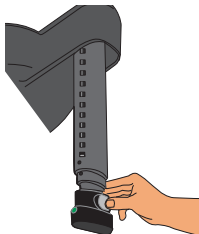
9. Squeeze the Release Button on the Load Leg and extend it until the Foot makes firm contact with vehicle floor. Lock Leg into place using the first hole that will firmly lock it against the vehicle floor.

It may be necessary to lift up slightly on the Base to allow the Foot to lock into the hole.

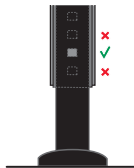
8



9



Use the **FIRST** hole that will lock the Load Leg Foot firmly against vehicle floor.



Installing and Removing the Infant Carrier

Installing with Base Using Lap/Shoulder Belts

10. Check that the Recline Angle remained in the appropriate range for the child's weight. If not, remove Base, adjust recline angle and reinstall.

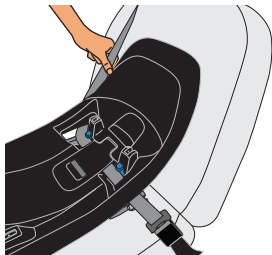
1.8 - 9 kg
(4 - 20 lbs)

9 - 15.8 kg
(20 - 35 lbs)

Make sure that vehicle belt buckle and hardware do not interfere with correct installation of the Base or with the connection of the Infant Carrier to the Base.

11. Put vehicle belt in locked mode (see vehicle Owner's Manual for more information). In most vehicles, you can switch the shoulder belt retractor into locking mode by pulling out shoulder belt all the way and then letting it rewind into the retractor. Pull on the belt to make sure it is locking.
12. If the Infant Carrier is next to a vehicle door or panel, extend the adjacent L.S.P. device (pg. 31).

11



Installing and Removing the Infant Carrier

Installing with Base Using Lap Belt Only

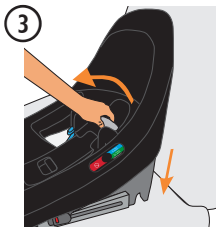
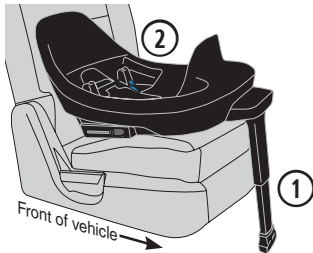
1. Ensure that Rigid LATCH is in the storage position and, if equipped, unfold the Load Leg from underneath the Base.
2. Position Base on a rear vehicle seat.

NOTE: If necessary, the Base may be installed with the Load Leg folded up underneath the Base. Consult the vehicle owner's manual and the Load Leg Warnings on pages 21-22 of this manual. If ALL installation requirements for the Load Leg cannot be met, you **MUST** choose another seating position or install the Infant Carrier without the Base.

3. Adjust the Leveling Foot to achieve the correct range for your child's weight as shown on the Level Indicator.

1.8 - 9 kg
(4 - 20 lbs)

9 - 15.8 kg
(20 - 35 lbs)

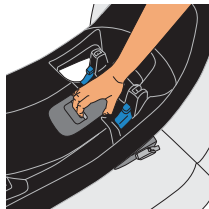


Installing and Removing the Infant Carrier

Installing with Base Using Lap Belt Only

4. Open SafeLock Belt Tensioner.

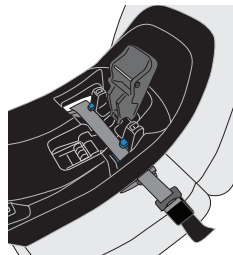
④



5. Route the vehicle lap belt under the SafeLock Belt Tensioner and through the blue belt guides on both sides of the Base. **BUCKLE THE BELT**. Make sure the lap belt lays flat and is not twisted.

The vehicle belt should **ALWAYS** be routed **UNDER** the tab on the Belt Guide. **NEVER** place a vehicle belt over the tab on the Belt Guide, even in a vehicle with longer buckle stalks.

⑤



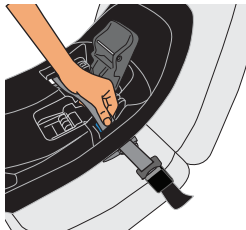
Installing and Removing the Infant Carrier

Installing with Base Using Lap Belt Only

6. On the buckle side, remove slack from the lap belt, being careful not to overtighten. The SafeLock Belt Tensioner will tighten the system fully.

NOTE: After removing slack, secure the free end of the lap belt under the SafeLock Belt Tensioner.

6



7. Press down on SafeLock Belt Tensioner until it locks into place.

If Belt Tensioner does not lock, try loosening the vehicle belt slightly.

7



Installing and Removing the Infant Carrier

Installing with Base Using Lap Belt Only

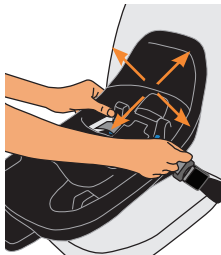
8. Grab the Base at the Belt Path and pull from side to side and front to back to make sure it is installed correctly. The Base should not move more than 2.5 cm (1 in) in any direction.

If the Base moves too much, open the SafeLock Belt Tensioner and remove a little more slack from the vehicle belt, then close and recheck. After this, if the Base still moves too much, you may need to try a different vehicle seat location or installation method, or both.

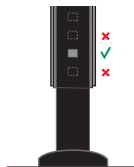
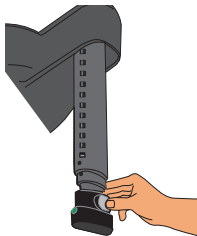
9. Squeeze the Release Button on the Load Leg and extend it until the Foot makes firm contact with vehicle floor. Lock Leg into place using the first hole that will firmly lock it against the vehicle floor.

It may be necessary to lift up slightly on the Base to allow the Foot to lock into the hole.

8



9



Use the **FIRST** hole that will lock the Load Leg Foot firmly against vehicle floor.

Installing and Removing the Infant Carrier

Installing with Base Using Lap Belt Only

10. Check that the Recline Angle remained in the appropriate range for the child's weight. If not, remove Base, adjust recline angle and reinstall.

1.8 - 9 kg
(4 - 20 lbs)

9 - 15.8 kg
(20 - 35 lbs)

Make sure that vehicle belt buckle and hardware do not interfere with correct installation of the Base or with the connection of the Infant Carrier to the Base.

11. If the Infant Carrier is next to a vehicle door or panel, extend the adjacent L.S.P. device (pg. 31).

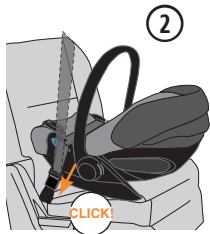
Installing and Removing the Infant Carrier

Installing the Infant Carrier Only Using Lap/Shoulder Belts

! WARNING! DEATH or SERIOUS INJURY can occur.

- **NEVER** install this child restraint using a non-locking vehicle lap shoulder belt. A locking clip must be used with a vehicle belt that **DOES NOT LOCK**. Call CYBEX Customer Care at 1-877-242-5676 to obtain a locking clip.
- **ALWAYS** have the handle locked while using this child restraint in a vehicle.
- **NEVER** recline back rest when using carrier in vehicle.

1. Position the Infant Carrier on a rear vehicle seat with the foot end towards the backseat, push it firmly against the vehicle seat.
2. Route only the vehicle lap belt under the **INFANT CARRIER BELT GUIDES** and **BUCKLE THE BELT.**



Installing and Removing the Infant Carrier

Installing the Infant Carrier Only Using Lap/Shoulder Belts

3. Lift shoulder belt over handle and around Infant Carrier. Slide shoulder belt into the blue Shoulder Belt Guide **A**.

NOTE: Ensure that the shoulder belt is routed below the L.S.P. System in either the extended or retracted position.

4. Lock your vehicle lap shoulder belt. Refer to your vehicle Owner's Manual for how your vehicle lap and shoulder belt locks.

In many vehicles, you can switch the shoulder belt retractor into locking mode by pulling the shoulder belt out all the way. In some vehicles the buckle locks. Check the vehicle Owner's Manual to see how your system locks.

To check if the vehicle belt is locked, after you install the infant carrier, pull up firmly on the lap belt between the Belt Guides. The belt should remain tight if the vehicle system is locked.

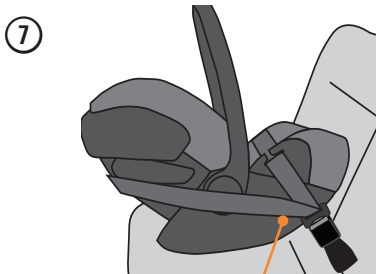
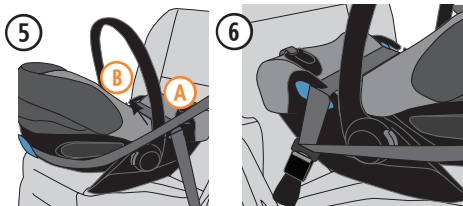


Installing and Removing the Infant Carrier

Installing the Infant Carrier Only Using Lap/Shoulder Belts

5. Push Infant Carrier firmly into vehicle seat pressing down near the crotch strap between the child's legs (A) while removing slack from lap belt (B). Repeat for shoulder belt.
6. Make sure that vehicle belt buckle and hardware do not interfere with the Infant Carrier.
7. Check the recline angle. Adjust the seat angle until the **BLUE LEVEL LINE** on the Infant Carrier is level with the ground. A tightly rolled towel or pool noodle (pg. 65) may be placed under the Infant Carrier, near the vehicle seat back to adjust the angle, if necessary.

NOTE: The CLOUD G/CLOUD G LUX is allowed to touch the vehicle seat(s) in front of it, as long as the recline angle of the CLOUD G/CLOUD G LUX is not affected.



FRONT OF VEHICLE

LINE MUST BE LEVEL WITH GROUND
WHEN INSTALLED WITHOUT BASE

Installing and Removing the Infant Carrier

Installing the Infant Carrier Only Using Lap/Shoulder Belts

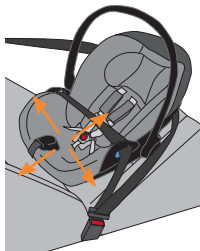
8. Grab the Infant Carrier at the Belt Guides and pull from side to side and front to back to make sure it is installed correctly. The Infant Carrier should not move more than 2.5 cm (1 in) in any direction.

If the Infant Carrier moves too much, tighten the vehicle belts more and recheck. You may try a different vehicle seat or installation method, or both.

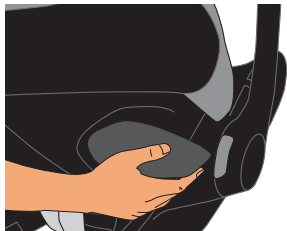
9. If the Infant Carrier is next to a vehicle door or panel, extend the adjacent L.S.P. device (pg. 31).

8

Front of vehicle →



9



Installing and Removing the Infant Carrier

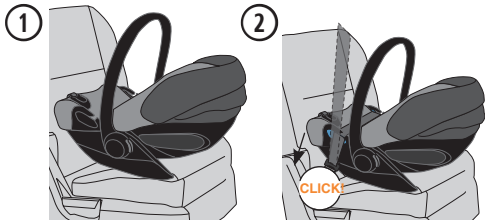
Installing the Infant Carrier Only Using Lap/Shoulder Belts (Alternate)

Use this alternate installation method only when the preferred method found on page 52 does not work with your vehicle Lap and Shoulder belts.

! WARNING! DEATH or SERIOUS INJURY can occur.

- **NEVER** install this child restraint using a non-locking vehicle lap shoulder belt. A locking clip must be used with a vehicle belt that **DOES NOT LOCK**. Call CYBEX Customer Care at 1-877-242-5676 to obtain a locking clip.
- **ALWAYS** have the handle locked while using this child restraint in a vehicle.
- **NEVER INSTALL** the Infant Carrier with both the Lap and Shoulder Belts routed underneath the Belt Guides.
- **NEVER** recline back rest when using carrier in vehicle.

1. Position Infant Carrier firmly against the back of the rear vehicle seat as shown.
2. Route only the vehicle lap belt under the **CARRIER BELT GUIDES** and **BUCKLE THE BELT.**



Installing and Removing the Infant Carrier

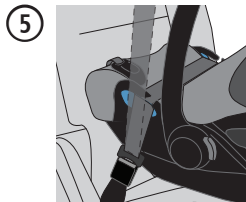
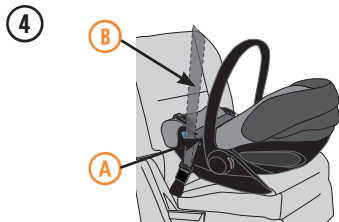
Installing the Infant Carrier Only Using Lap/Shoulder Belts (Alternate)

3. **LOCK** your vehicle lap shoulder belt. Refer to your vehicle Owner's Manual for how your vehicle lap and shoulder belt locks.

In many vehicles, you can switch the shoulder belt retractor into locking mode by pulling the shoulder belt out all the way. In some vehicles the buckle locks. Check the vehicle Owner's Manual to see how your system locks.

To check if the vehicle belt is locked, after you install the infant carrier, pull up firmly on the lap belt between the Belt Guides. The belt should remain tight if the vehicle system is locked.

4. Push Infant Carrier firmly into vehicle seat, pressing down near the crotch strap between the child's legs, while removing slack from lap belt **A**. Repeat for shoulder belt **B**.
5. Make sure that vehicle belt buckle and hardware **DO NOT INTERFERE** with the Infant Carrier.



Installing and Removing the Infant Carrier

Installing the Infant Carrier Only Using Lap/Shoulder Belts (Alternate)

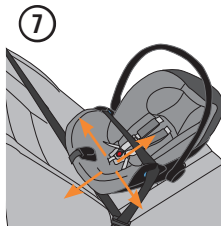
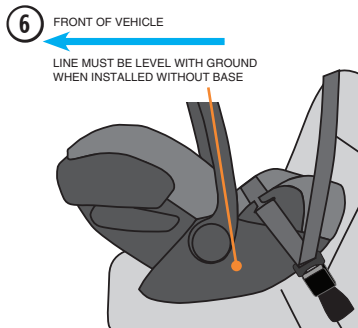
6. Check the recline angle. Adjust the seat angle until the **BLUE LEVEL LINE** on the Infant Carrier is level with the ground. A tightly rolled towel or pool noodle (pg. 65) may be placed under the Infant Carrier, near the vehicle seat back to adjust the angle, if necessary.

The CLOUD G/CLOUD G LUX is allowed to touch the vehicle seat(s) in front of it, as long the recline angle of the CLOUD G/CLOUD G LUX is not affected.

7. Grab the Infant Carrier at the Belt Guides and pull from side to side and front to back to make sure it is installed correctly. The Infant Carrier should not move more than 2.5 cm (1 in) in any direction.

If the Infant Carrier moves too much, tighten the vehicle belts more and recheck. You may try a different vehicle seat or installation method, or both.

8. If the Infant Carrier is next to a vehicle door or panel, extend the adjacent L.S.P. device (pg. 31).



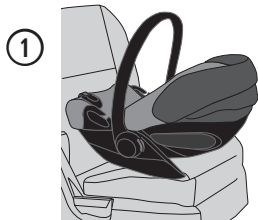
Installing and Removing the Infant Carrier

Installing the Infant Carrier Without Base Using Lap Belt Only

! WARNING! DEATH or SERIOUS INJURY can occur.

- **ALWAYS** have the handle locked while using this child restraint in a vehicle.
- **NEVER** recline back rest when using carrier in vehicle.

1. Position Infant Carrier firmly against the back of the rear vehicle seat as shown.



2. Route vehicle lap belt under **CARRIER BELT GUIDES** and **BUCKLE THE BELT.**

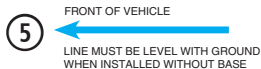
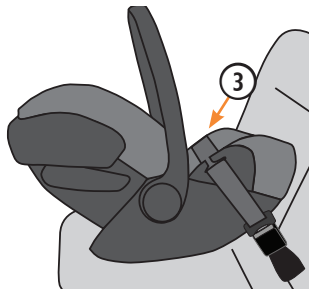


Installing and Removing the Infant Carrier

Installing the Infant Carrier Without Base Using Lap Belt Only

3. Push Infant Carrier firmly into vehicle seat, pressing down near the crotch strap between the child's legs, while removing slack from the lap belt.
4. If necessary, tuck the loose end of the lap belt out of the way.
5. Check the recline angle. Adjust the seat angle until the **BLUE LEVEL LINE** on the Infant Carrier is level with the ground. A tightly rolled towel or pool noodle (pg. 65) may be placed under the Infant Carrier near the vehicle seat back to adjust the angle.

The CLOUD G/CLOUD G LUX is allowed to touch the vehicle seat(s) in front of it, as long the recline angle of the CLOUD G/CLOUD G LUX is not affected.



Installing and Removing the Infant Carrier

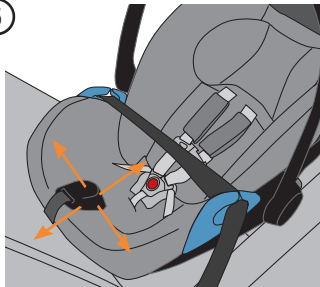
Installing the Infant Carrier Without Base Using Lap Belt Only

6. Grab the Infant Carrier at the Belt Guides and pull from side to side and front to back to make sure it is installed correctly. The Infant Carrier should not move more than 2.5 cm (1 in) in any direction.

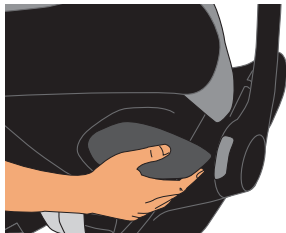
If the Infant Carrier moves too much, tighten the vehicle belts more and recheck. You may try a different vehicle seat or installation method, or both.

7. If the Infant Carrier is next to a vehicle door or panel, extend the adjacent L.S.P. device (pg. 31).

6



7

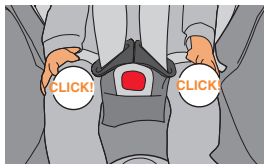
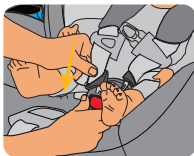


Using the Infant Carrier Harness Buckle

To release Buckle Tongues, firmly press the red button on the Harness Buckle and pull the tongues out.

To fasten, insert each Tongue into Buckle, listening for an audible **CLICK**. Pull on each to verify a secure connection.

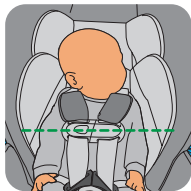
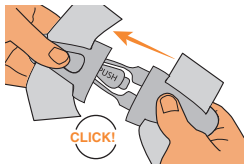
Check that the Buckle functions properly and is kept free of dirt and debris. For cleaning, see pg. 82.



Chest Clip

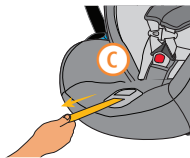
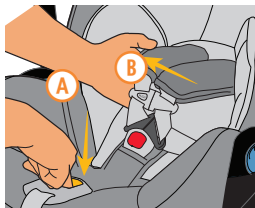
To separate Chest Clip, push button and pull apart. To fasten, slide the two pieces together until an audible **CLICK** is heard.

Always position the center of the Chest Clip even with the child's armpits.



Using the Infant Carrier Harness Adjustment

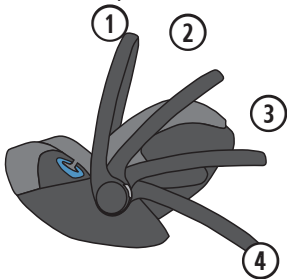
Loosen Harness by firmly pressing down the Harness Adjustment Button **A** while pulling forward on both straps **B** at shoulder level. Pull the Adjuster Strap **C** to tighten the Shoulder Straps.



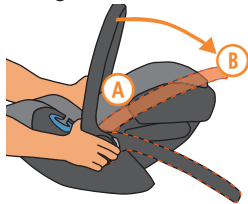
Handle Positions

The Handle has four locked positions:

1. Carrying
2. Intermediate
3. Intermediate
4. Resting



To rotate the handle, squeeze BOTH Handle Adjustment Buttons **A** at the same time while moving the handle **B** between positions.

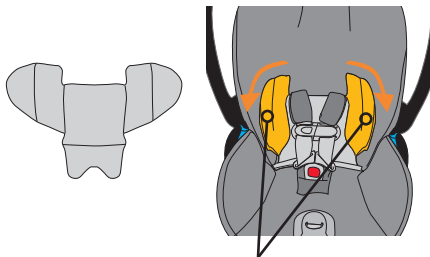


Using the Infant Carrier Infant Insert

The Infant Insert will help provide a better harness fit for smaller babies, as well as stability for the torso.

We recommend using the Infant Insert until the baby weighs about 5 kg (11 lbs) or about 3 months.

When used with a smaller child, the body pillow side wings can be folded in for better support of the child and to help with proper fit when securing the child (see pgs. 70-72).



Foldable side wings

Integrated XXL Canopy*

The Integrated XXL Canopy has four positions. Simply pull forward to extend and gently push back to retract the canopy into its original position.



* Styles may vary.

Using the Infant Carrier

Adjusting the Recline Angle for an Infant Carrier with No Base

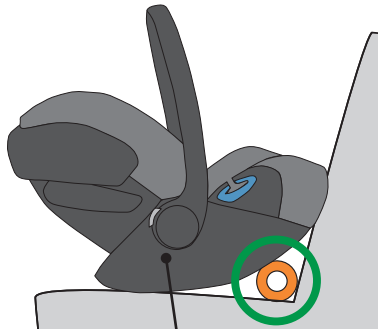
⚠️ **WARNING!** DEATH or SERIOUS INJURY can occur.

- It is very important for your child's safety that this child restraint be installed at the correct angle. Failure to properly recline the child restraint on the vehicle seat increases the risk of **DEATH OR SERIOUS INJURY**.
- **DO NOT** use this or any other child restraint with a premature, low birth weight, or medically fragile infant, until after you have consulted with your doctor. Some infants may have difficulty breathing or have other medical problems when placed in a seated position.
- If the child restraint is **TOO UPRIGHT**, the child's head may fall forward and cause breathing problems. If the child restraint is **TOO RECLINED** crash protection will be reduced.

Adjust the seat angle until the **BLUE LEVEL LINE** on the Infant Carrier is level with the ground.

If you are having trouble achieving the proper recline angle:

1. Uninstall Infant Carrier.
2. Place a tightly rolled towel or pool noodle under the Infant Carrier, near the vehicle seat back, as indicated by the green circle.



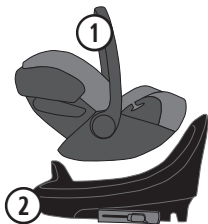
← **Front of Vehicle**
Line must be level with ground when installed without Base.

Using the Infant Carrier with the Base Attaching the Infant Carrier to the Base

! WARNING! DEATH or SERIOUS INJURY can occur.

ALWAYS have the handle locked while using this child restraint in a vehicle.

1. Make sure handle is locked.
2. Lift Infant Carrier by the Handle and angle the front end down onto the Base.



3. Install the Infant Carrier onto the Base. An audible **CLICK** is heard.



4. Lift up on the Carrier to ensure it is secured to the Base.
5. If the Infant Carrier is next to a vehicle door or panel, extend the adjacent L.S.P. (see pg. 31).



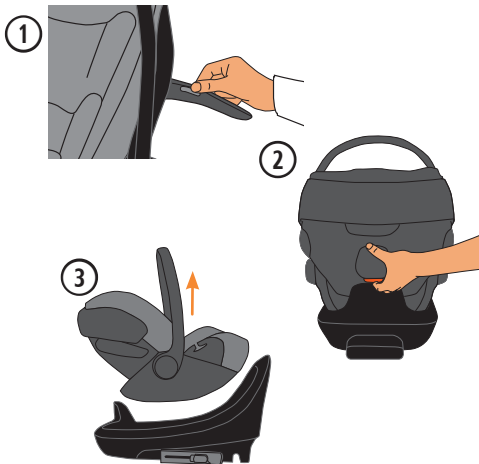
The CLOUD G/CLOUD G LUX is allowed to touch the vehicle seat(s) in front of it, as long as the recline angle of the CLOUD G/CLOUD G LUX is not affected.

Using the Infant Carrier with the Base Removing the Infant Carrier from the Base

! WARNING! DEATH or SERIOUS INJURY can occur.

ALWAYS verify that the handle is **LOCKED** in the carrying position (see pg. 63) before lifting Infant Carrier by the handle. An unlocked handle could move unexpectedly, causing child to fall out.

1. If used, retract the L.S.P. (see pg. 31).
2. Squeeze the Base/Stroller Release Button.
3. Lift the Carrier off the Base.



Using the Infant Carrier with the Base Adjusting the Recline Angle with the Base

⚠ WARNING! DEATH or SERIOUS INJURY can occur.

- It is very important for your child's safety that this child restraint be installed at the correct recline angle. Before attaching the Infant Carrier to the Base, always check the Level Indicator for the correct recline angle range based on your child's weight. Failure to properly recline the child restraint on the vehicle seat increases the risk of **DEATH OR SERIOUS INJURY**.
- **DO NOT** use this or any other child restraint with a premature, low birth weight, or medically fragile infant, until after you have consulted with your doctor. Some infants may have difficulty breathing or have other medical problems when placed in a seated position.
- If the child restraint is **TOO UPRIGHT**, the child's head may fall forward and cause breathing problems. If the child restraint is **TOO RECLINED** crash protection will be reduced.

Using the Infant Carrier with the Base

Adjusting the Recline Angle with the Base

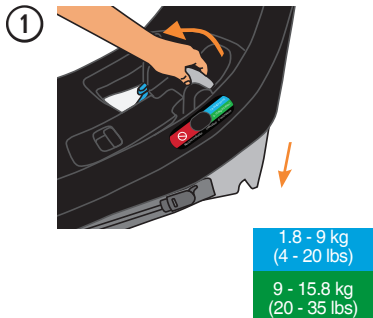
Adjusting Recline Angle

1. Pull the Recline Foot Adjustment Handle to extend or retract the Leveling Foot until the Base is within the recommended range for your child. There are four recline positions.
2. Release handle to lock Foot in place.
3. Install Base. Be sure to check for correct recline angle after installation.

IMPORTANT:

Vehicle must be on a level surface for the Level Indicator to function correctly.

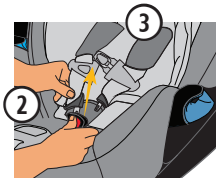
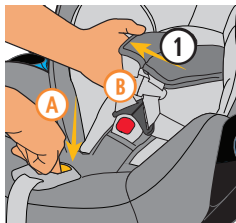
If the Recline Angle is not correct after installation, uninstall the Base, adjust Leveling Foot and reinstall.



Securing the Child

! WARNING! DEATH or SERIOUS INJURY can occur.

- **ALWAYS** check the Harness Buckle to make sure it is securely latched. Failure to fasten and tighten the Harness system correctly with each use can result in **DEATH** or **SERIOUS INJURY**.
 - In cold weather, **DO NOT** dress the child in bulky clothing like snowsuits when riding in a Car Seat. Bulky clothing makes it difficult to properly tighten the harness to the child, which may allow the child to be ejected from the restraint during a crash. If necessary, place a blanket over the harnessed child without interfering with the Harness system.
1. Loosen Harness by firmly pressing down on the Harness Adjustment Button (A) while pulling forward on both straps at shoulder level (B).
 2. Press red button on Harness Buckle to release Tongues.
 3. Separate Chest Clip and spread straps apart. Place child in Infant Car Seat in seated position making sure their bottom is in the seat, and their back is fully supported.

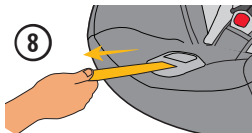
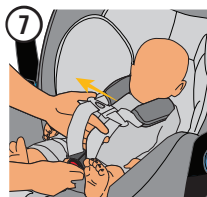
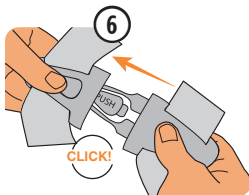
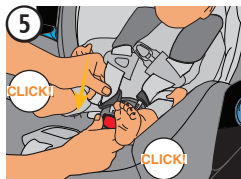
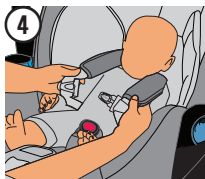


Securing the Child

4. Pull Harness straps over each arm onto shoulders and around the hips. Make sure Buckle Pad and Harness Buckle are between the legs.

IMPORTANT: MAKE SURE Harness straps are **AT OR JUST BELOW** child's shoulders.

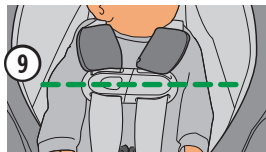
5. Buckle by inserting one Tongue at a time into the Harness Buckle, listening for an audible **CLICK** with each one. Make sure Harness Straps are not twisted.
6. Connect the Chest Clip listening for an audible **CLICK**.
7. Pull up on Harness Straps to snug around the child's hips while holding the Harness Buckle in place.
8. Slowly pull the adjuster strap to tighten the Shoulder Straps. A snug strap should not allow any slack. It lies in a relatively straight line without sagging. It does not press on the child's flesh or push the child's body into an unnatural position.



Securing the Child

9. Position the center of the Chest Clip even with the child's armpits. Make sure the Shoulder Pads do not interfere with the placement of the Chest Clip.

NOTE: If the Shoulder Pads don't allow a proper fit, they can be removed to provide more space for the Chest Clip. Unsnap to remove.



10. To test for a properly tightened Harness, pinch the shoulder strap. A snug Harness should not allow you to pinch any slack when pinched between your thumb and forefinger. If needed, pull adjuster strap further for a tight and proper fit.



11. Verify that the seat recline angle is correct.
- **If installed with the base**, check that the Recline Angle remains in the appropriate range for the child's weight.
 - **If installed without the base**, ensure that the **BLUE LEVEL LINE** on the shell is level with the ground.

Using the Infant Carrier on Aircraft

! WARNING! DEATH or SERIOUS INJURY can occur.

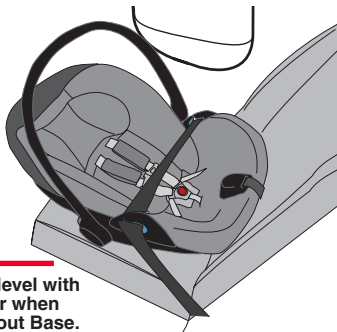
- The FAA recommends that children up to 18 kg (40 lbs) use a certified, harnessed child seat while traveling on an airplane. The CLOUD G/CLOUD G LUX is certified for aircraft use if used WITHOUT the Base.
- **ALWAYS** have the handle locked while using this child restraint on aircraft.
- **NEVER** use the L.S.P. device on aircraft.
- **NEVER** recline back rest when using carrier in aircraft.



Install your Infant Carrier in a window seat to avoid blocking the aisle.

NOTE: Remember to gate check your Base or check it in as luggage if you plan to use it at your destination.

1. Position Infant Carrier rear facing in aircraft seat with the foot end firmly against the back of the aircraft seat.
2. Route lap belt under both Belt Guides.
BUCKLE THE BELT.
3. Push Infant Carrier firmly into aircraft seat while removing slack from the lap belt.

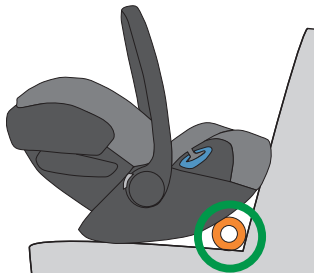


Line must be level with aircraft floor when installed without Base.

Using the Infant Carrier on Aircraft

4. Check the recline angle. Adjust the seat angle **UNTIL THE BLUE LEVEL LINE ON THE INFANT CARRIER IS LEVEL WITH THE FLOOR OF THE AIRCRAFT.**

NOTE: A tightly rolled airline blanket may be placed under the Infant Carrier, near the vehicle seat back, (as indicated by the green circle) to adjust the angle .



5. Grab the Infant Carrier at the Belt Guides and pull from side to side and front to back to make sure it is installed correctly. The Infant Carrier should not move more than 2.5 cm (1 in) in any direction.

If the Infant Carrier moves too much, tighten the airplane belts more and recheck.

6. If using a **CLOUD G LUX** and your seat is equipped with **SensorSafe**, unfasten the chest clip. In order to comply with the FAA regulation for Portable Electronic Devices (PED), the **SensorSafe Chest Clip MUST** be unfastened during take-off or landing.

NOTE: After landing, refasten the **SensorSafe Chest Clip** before removing the Infant Car Seat from the Aircraft seat.

Removing and Replacing Seat Covers

! WARNING! DEATH or SERIOUS INJURY can occur.

- The integrated Harness System cannot be removed from the seat. **NEVER** remove or attempt to remove parts of the Harness System.
- **DO NOT** damage, remove or dispose of any EPS foam.
- **NEVER** use Infant Carrier without a properly installed Seat Cover.

FOR A STEP-BY-STEP INSTRUCTION VIDEO ON REMOVING AND REPLACING SEAT COVERS, SCAN THE QR CODE.



Removing the Seat Cover

1. Disconnect harness buckle and chest clip (see pg. 62).
2. Unsnap the two Shoulder Pads from the harness.

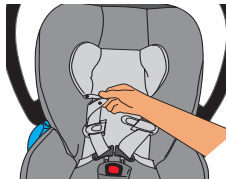


Removing and Replacing Seat Covers

3. If using the Infant Insert, simply remove it from the harness straps.



4. Pull headrest cover forward and unsnap the two snaps to remove it from the harness.



5. Unsnap the two snaps holding the canopy fabric and push canopy forward.



Removing and Replacing Seat Covers

6. Unsnap the three snaps from the top of the plastic shell.

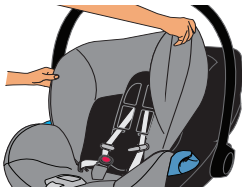


7. Unsnap two dual action snaps at side of carrier.



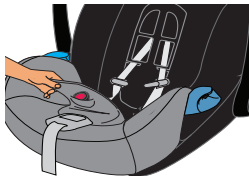
8. Remove the backrest cover.

NOTE: Be sure to remove the bottom corners of the backrest cover from the tabs on the inside of the seat before fully removing the cover.



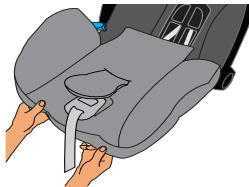
Removing and Replacing Seat Covers

- Place the Infant Carrier in Full Recline Mode (pg. 32), then pull the harness buckle out of the seat cover and remove the seat cover from around the Harness Adjuster.



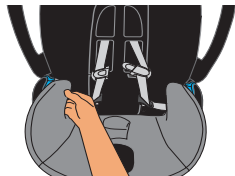
- Remove the seat cover from the carrier.

NOTE: Be sure to remove the rear corners of the seat cover from the tabs on the inside of the seat before fully removing the cover.



Installing the Seat Cover

- With the Infant Carrier fully reclined, install the seat cover to the Infant Carrier, being sure to pull it over the tabs on the inside of the seat shell.

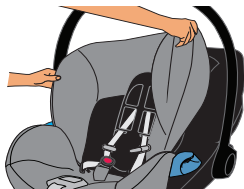


Removing and Replacing Seat Covers

2. Install the seat cover around the Harness Adjuster, then feed the harness buckle into the seat cover.



3. Replace the backrest cover, being sure to pull it over the tabs on the inside of the seat shell.



4. Snap two dual action snaps at side of carrier.



Removing and Replacing Seat Covers

5. Snap the three snaps at the top of the plastic shell.

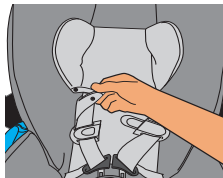
NOTE: You may need to lift up on the fabric around the edge of the shell to access these snaps.



6. With the canopy fully extended, snap the two snaps holding the canopy fabric in place.

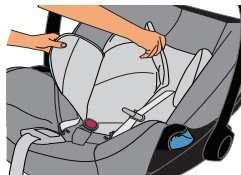


7. Replace the headrest cover and snap the two snaps to attach it to the harness.

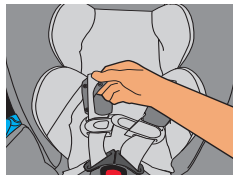


Removing and Replacing Seat Covers

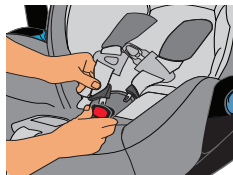
8. Reattach Infant Insert to harness if used.



9. Reattach two shoulder pads to harness.



10. Reconnect harness buckle and chest clip (see pg. 62).



Care and Cleaning

IMPORTANT: NEVER use bleach, household cleaners, or solvents. **DO NOT** use lubricants of any kind.

FOR INSTRUCTION VIDEO ON CARE AND CLEANING, SCAN THE QR CODE.



Seat Cover, Shoulder Pads, Infant Insert

- Spot clean as needed with a clean cloth using mild detergent and water.
- Machine wash in cold water on delicate cycle.
- Air Dry. **DO NOT** iron.

Harness Straps

Sponge clean using warm water and mild soap. Air dry. **DO NOT** iron.

Harness Buckle and Rigid LATCH Connectors

- Spot clean as needed with mild detergent and warm water.
- Allow to dry thoroughly.
- Test by fastening and unfastening until an audible **CLICK** is heard. If there is no **CLICK**, repeat the cleaning procedure.

Plastic Parts

Wipe clean with mild detergent and warm water.

Safety Checklist

- Did you read and understand this Owner's Manual and all labels found on this child restraint?
- Is the child restraint rear facing in an approved vehicle seat location?
- If using the CLOUD G/CLOUD G LUX Base, is the Infant Carrier securely attached to the Base?
- If using the CLOUD G LUX Load Leg, is it locked firmly against the vehicle floor?
- Is the seat recline angle correct according to the Level Indicator on the base or the **BLUE LEVEL LINE** on the shell?
- Is the No Rethread Harness adjusted to the correct position for the size of the baby with the Harness Slots at or below your child's shoulders?
- Is the Harness snug around the baby and secured properly with the Chest Clip positioned at armpit level?
- Is the handle **LOCKED** while using this child restraint in a vehicle?
- Is the carrier in Car Seat Mode?
- If the child restraint is next to a vehicle door or panel, is the adjacent L.S.P. device extended?
- Does your child weigh between 1.8 and 15.8 kg (4 and 35 lbs)?
- Is your child between 43 and 81 cm (17 and 32 in) in height?
- Is the top of your child's head more than 2.5 cm (1 in) from the top of the Infant Carrier or headrest, whichever is higher?
- Is today's date before the "Do Not Use After" date on the child restraint?
- Did you check for hot surfaces?

If you answered YES to all of these questions, you are good to go, and please **DRIVE SAFELY!**

Resources

Installation Help

Installing your Child Restraint correctly in your vehicle is extremely important for your child's safety. However, it is not always easy to do. **Statistics show that over 75% of Child Restraints are being used incorrectly!**

Please contact our Customer Care Department, where we have many Child Passenger Safety (CPS) Technicians on staff, with any questions you may have concerning installation, parts, maintenance, or warranty information. If you have specific questions, e-mail us a picture. It will help us serve you better.

When you contact us, please have the Model Number and Manufactured on Date ready so that we may help you efficiently. This information can be found on the registration card or on the underside of your Infant Carrier and Base.

Please contact the U.S. CYBEX Distributor, Columbus Trading-Partners USA, Inc.

- Toll free: 1-877-242-5676
- E-mail: info.us@cybex-online.com
- Web: www.cybex-online.com

Make sure your CYBEX CLOUD G/ CLOUD G LUX is installed correctly by using one of the following:

- www.nhtsa.gov/cps/cpsfitting/index.cfm
- www.safekids.org
- www.seatcheck.org
- Your local fire and police departments for certified CPS Technicians.

Recycling: Once your seat has reached its expiration date, we recommend recycling the seat. Contact your local community recycling center for the best way to dispose of your seat. We do not recommend giving or selling the seat to anyone, or simply putting it in the garbage.

Warranty

IMPORTANT: Immediately register your CLOUD G/CLOUD G LUX so we can contact you in the unlikely event of a safety recall. Register online at <http://register.cybex-online.com/us/carseats> or mail in the separate registration card provided.

LIMITED WARRANTY

CYBEX warrants to the original consumer purchaser that this product will be free from defects in material and workmanship for two (2) years from the date of original purchase (the “Warranty Period”). During the Warranty Period, CYBEX, at its option, may repair or replace this product if it is found by the manufacturer to be defective in material or workmanship. CYBEX reserves the right to discontinue or change parts, fabrics, models, or products, or to substitute this product with a comparable model or product. To make a claim under this warranty, please contact us at info.us@cybex-online.com, call us at 1-877-242-5676, or write to us at:

CYBEX Warranty
Columbus Trading-Partners USA Inc.
1801 Commerce Drive
Piqua, Ohio 45356, USA

An original receipt is required to validate your warranty and shipping charges will be the responsibility of the original consumer purchaser. To expedite the processing of any future warranty claims and to verify the original date of purchase, please complete and mail the pre-addressed owner registration card within thirty (30) days of purchase.

Warranty

WARRANTY LIMITATIONS

This warranty does not cover the effects of normal wear and tear or damages resulting from negligence, modification, improper installation, accidents, misuse or abuse of this product. It is expressly agreed that the obligations of CYBEX and the original consumer purchaser's remedies under the limited warranty contained herein are exclusive and are strictly limited to the repair or replacement of the product. This limited warranty is conditional upon strict compliance with the provisions of the Owner's Manual. In no event will CYBEX or the dealer selling this product be liable to you for any damages, including incidental or consequential damages, arising out of the use or inability to use this product.

LIMITATION OF WARRANTIES AND STATE/PROVINCIAL LAW RIGHTS:

The warranty and remedies as set forth above are exclusive and in lieu of all others, oral or written, express or implied. To the extent permitted by applicable law, any implied warranties, including implied warranties of merchantability and fitness for a particular purpose, are hereby disclaimed. Some states/provinces do not allow limitations as to how long an implied warranty lasts or the exclusion or limitation of incidental or consequential damages, so the above limitations may not apply to you. This warranty gives you specific legal rights, and you may have other rights, which vary from state/province to state/province. Neither CYBEX nor the dealer selling this product has authorized any person to create for it any other warranty, obligation, or liability in connection with this product.

CYBEX Industrial Limited

Suite 1222, 12/F | Leighton Centre | 77 Leighton Road | Causeway Bay | Hong Kong
www.cybex-online.com

Distributed in the United States by Columbus Trading Partners USA Inc.
1801 Commerce Drive | Piqua, OH 45356 | USA

Tel: 1-877-242-5676 | e-mail: support.americas@goodbabyint.com | www.cybex-online.com

© 2022 CYBEX Industrial Limited. All rights reserved. Printed in China. This product and its components are subject to change without notice.
Patents pending.